



EVENTS & PRIVATE HIRE

ABOUT US

The London Reign is a world of opulence and sensuous glamour. Located in the heart of London, our venue is the jewel in the *Mayfair* crown.

This historic address started life over 100 years ago as one of the first London cinemas, followed by the infamous Red Fox Club which attracted stars of theatre and music. The venue has always been associated with performance and art and the stunning art deco design over two floors is timeless.

The gorgeous art deco venue has recently installed brand new state of the art laser lighting and this, along with our huge array of AV, is what makes the venue truly sensational. Guests experience the full London Reign experience of first-class service, outstanding performances and shows in a creative unique venue!

We offer a spectacle like no other combining performance theatre, aerial acts and fire breathers to name but a few, taking events to new heights with sophistication and glamour.

The London Reign is perfect for your next event and we cannot wait to welcome you for a site visit!



PRIVATE & CORPORATE HIRE

With its double height ceilings, private lounge areas and the very best AV in London, exclusive The London Reign offers a flexible, glamorous venue, perfect for all manner of events including, corporate parties, product launches, presentations, filming, networking to name just a few!

The London Reign has 2 spacious and creative areas;

The Mezzanine offers guests a private area with its own bar, gorgeous Chesterfield seating and low tables. This area overlooks the Main Room below and has a capacity of 100 guests.

A super flexible space which can be used for a multitude of functions, from back of house, green rooms to dedicated food stations or an entertainment zone.

Our beautiful art deco Main Room offers plenty of tiered seating, performance staging, dance floor PLUS a separate bar area with our very own Jelly Fish feature. The room has a built-in central DJ booth, double height ceilings, and the very best av installations! We can accommodate 300 guests within this space alone.

Guests can choose to hire each area or both for parties up to 400 guests!



PERFORMANCES

The London Reign was designed for spectacular shows.

From spinning aerialists to fire breathing dancers, we can offer both a specialised performance package or a bespoke show, to cater to every client's wildest dreams.

AWARD WINNING PERFORMERS

Our creative team will work with you to produce a showstopping event!

We work with performers from all over the UK and our acts include:

Aerial. Watch as our performers fly in and perform mid air. Perfect as guests arrive or as part of the programme.

MC for the night. Our MC can be on hand to ensure the evening runs to plan, introducing acts, speeches and gets the crowd fully involved.

Fire. Super hot performance on stage will dazzle your guests.

Acrobats. Showcasing amazing tumbling, balance walk around magician, dancers, tarot reader.

Photography and Videography of your event can also be arranged.

AV DESIGN PRODUCTION

Whether you need a full on branded themed event or just little touches, our inhouse team are on hand.

DESIGN

- Multi Level
- 2 Bars
- Large Mezzanine Capacity 100
- Main Room Capacity 300
- Merchandise Room Opportunity for
- Branding and Theming
- Multi Photo Opps
- Tiered Seating
- Balcony Viewing
- Jelly Fish Tank
- Glass Selfie Box Opportunity for
- Branding and Theming

INHOUSE BRANDING TEAM

- Press Board Design And Production
- Neon Signage
- Led Screen Animations
- Branded Merchandise
- Venue Transformation Theming
- Bespoke Menu Creation
- Staff Uniform Branding

INHOUSE AV

- Inhouse Photobooth
- Laser, Mood, Spot Lighting
- Funktion 1 Sound
- Microphone
- Staging
- Bespoke Animations
- Led Screen - Text And Visuals
- Confetti Bomb
- Huge Pyros
- DJ And Lighting Engineer

SAMPLE MENUS

BY
PIRANA
LONDON

CANAPES £5 EACH

ROCK SHRIMP TEMPURA
KIMCHEE MAYO

CRISPY FRIED SQUID
JALAPENO DRESSING

TUNA CRUNCHY TACO
AVOCADO, TRUFFLE PONZU

BLACK COD
BUTTER LETTUCE, DEN MISO

CHILEAN SEABASS
BUTTER LETTUCE, SPICY SHISO PONZU

BEEF KUSHIYAKI
ANTICUCHO SAUCE

MUSHROOM KUSHIYAKI (VE)
TERIYAKI SAUCE

PIRANA YASAI ROLL (VE)
ASPARAGUS, AVOCADO, TAKUWAN

SPICY TUNA MAKI
AJI PANCA, MISO

SALMON AVOCADO MAKI
SWEET SOY

SHIITAKE MUSHROOM CRUNCHY TACO (VE)
SWEET MISO, RED ONION, CORIANDER

FERRERO FEUILLETINE CRUNCH
CHOCOLATE, HAZEL NUT PRALINE

RED BERRY GANACHE
WHITE CHOCOLATE, PASSION FRUIT, COCONUT

WHITE CHOCOLATE CHEESECAKE
RASPBERRY CREMEUX, FRESH FRUITS

BOWL FOOD £12

TRUFFLE RICE (VE)
WILD MUSHROOM

CHILEAN SEABASS RICE
CHILLI, CORIANDER

NASU DENGAKU (VE)
STEAMED RICE, POMEGRANATE, BURELLA

UDON NOODLES (VE)
MIXED VEGETABLES

UDON SEAFOOD NOODLES
MIXED SEAFOOD AND VEGETABLES

AUSTRALIAN RIBEYE
STEAMED RICE AND KIZAMI SALSA

LEMON MISO SHRIMP
STEAMED RICE AND PICKLE PUMPKIN

MARINATED FRIED CHICKEN
QUINOA, WATERMELON, HONEY GINGER DRESSING

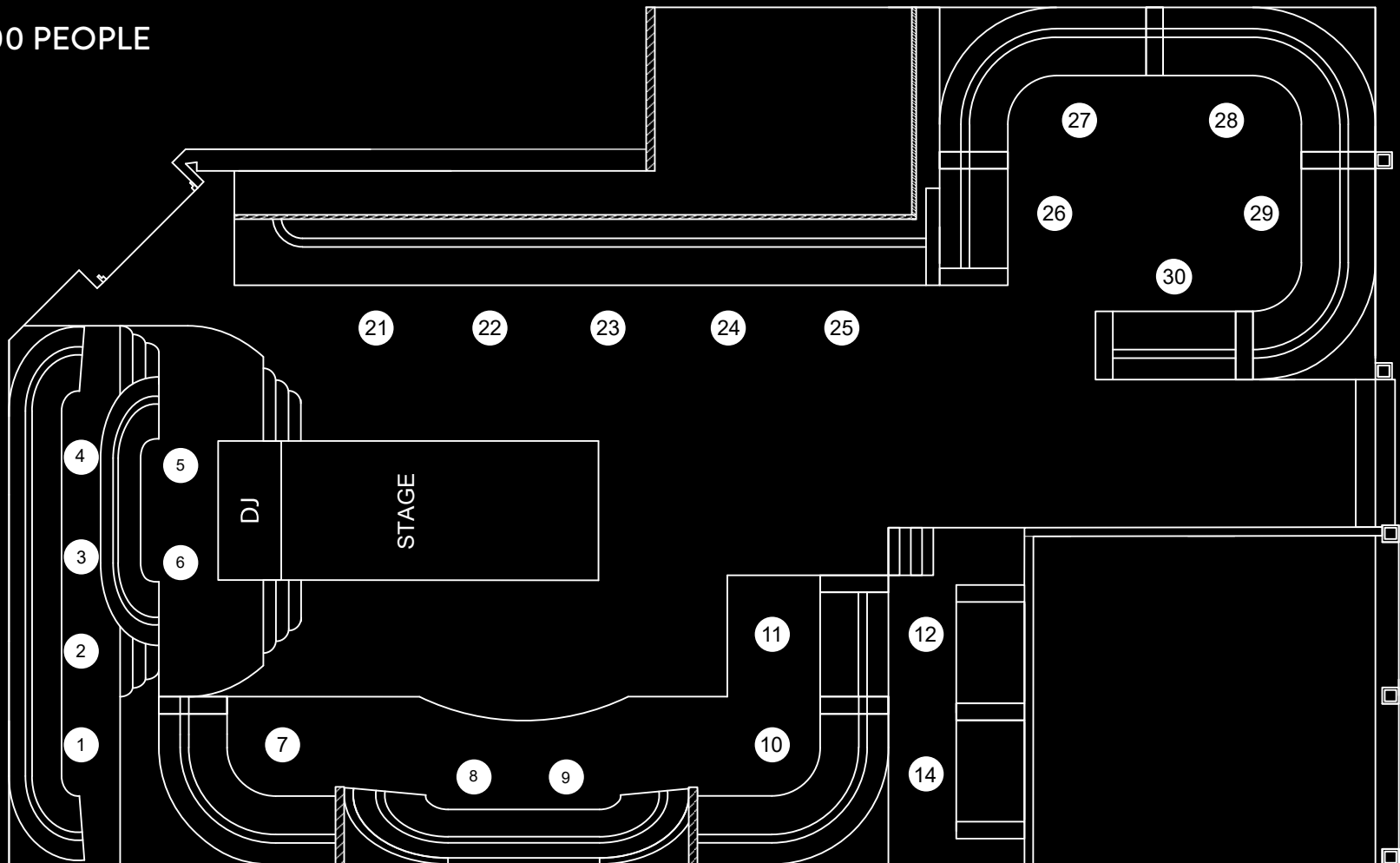
SWEET CORN SALAD
KIMCHEE, PARMESAN, RADISHES

MEZZANINE

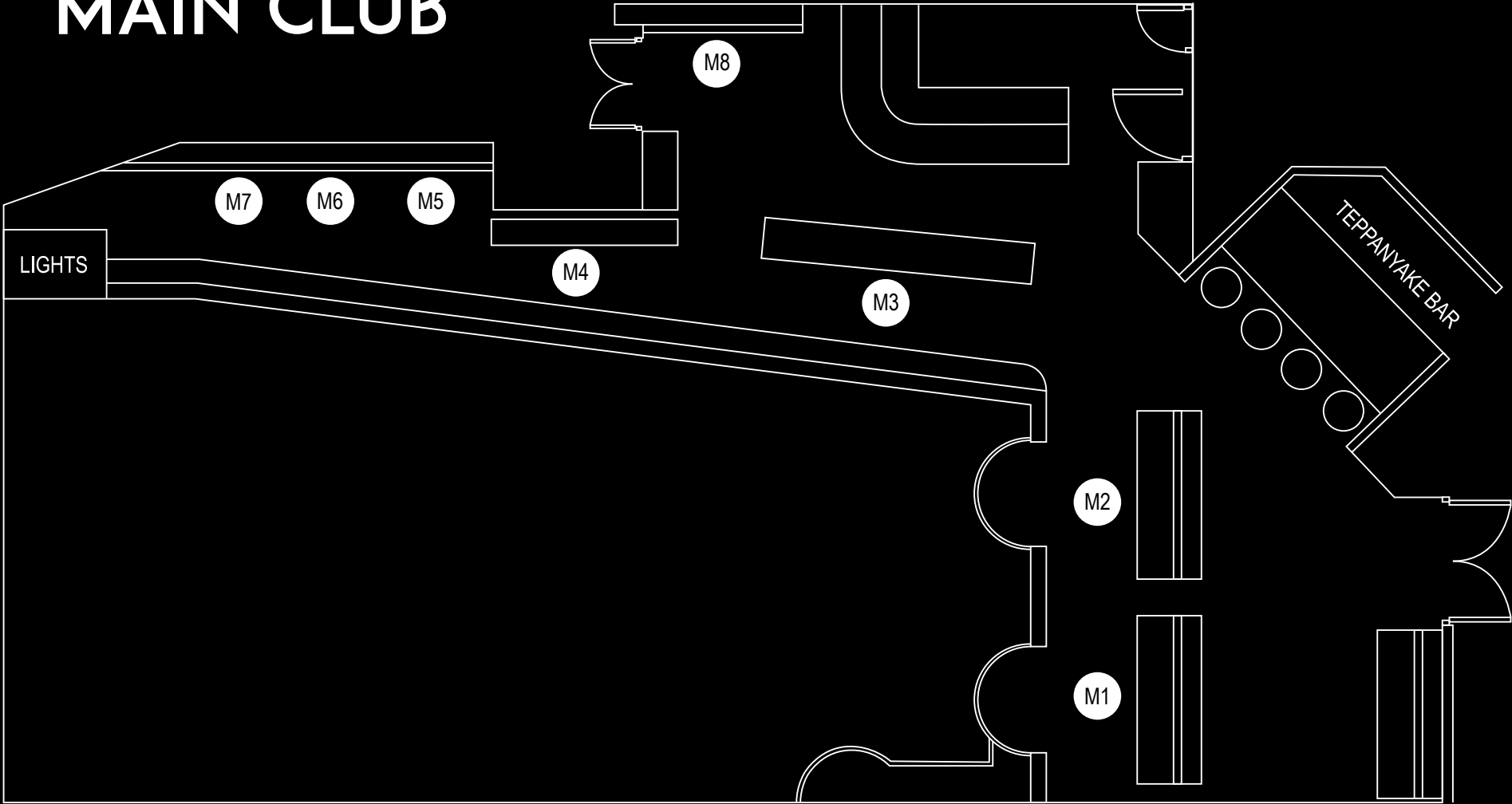
The London Reign caters to 400 guests over 2 floors. Typically 300 guests downstairs and 100 guests on the mezzanine.

CAPACITY - 400 PEOPLE

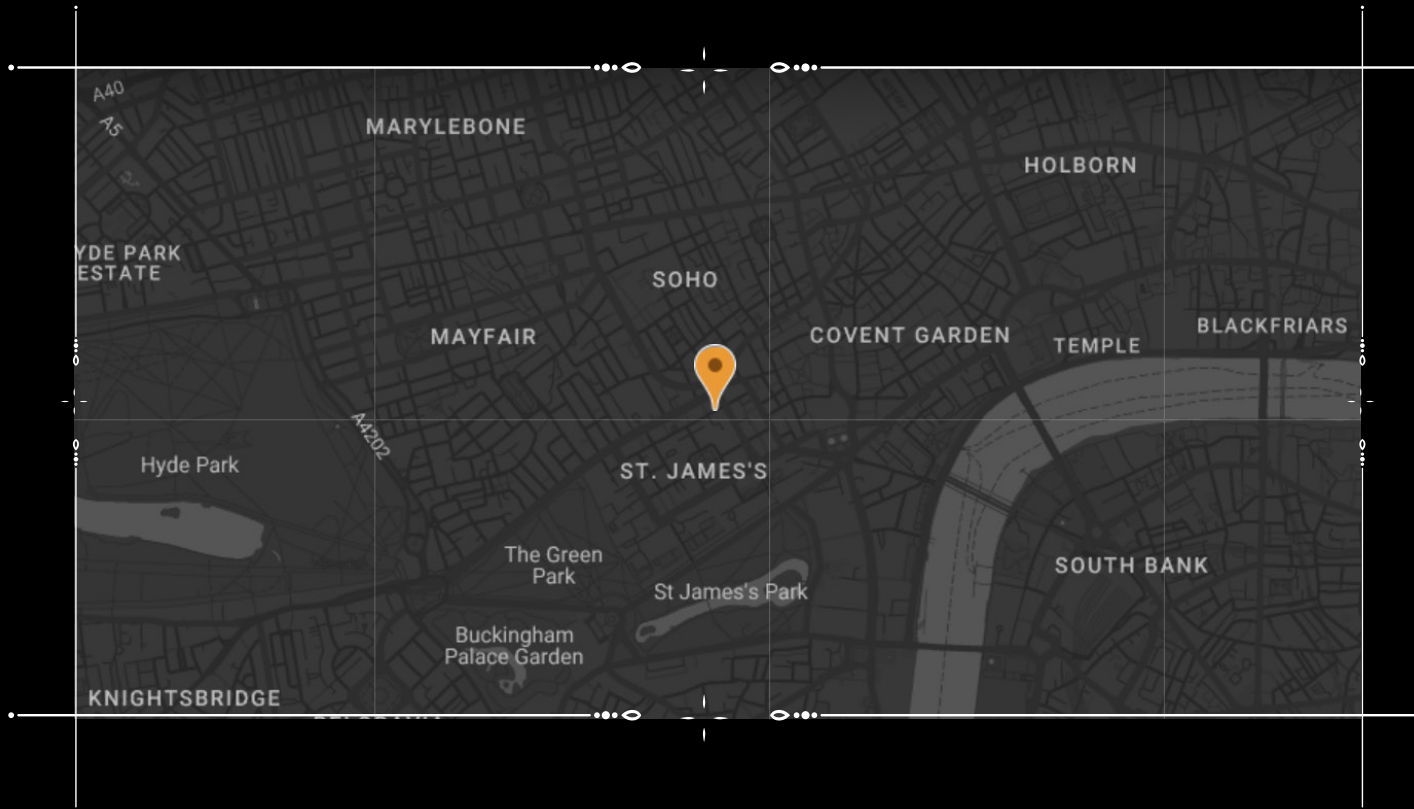
MAIN CLUB



MAIN CLUB







CONTACT US

events@thelondonreign.com

020 74 343 046

215-217 PICCADILLY,

LONDON, W1J 9HN

thelondonreign.com